

www.agrosourcegroup.com

Agrosource



WATER TREATMENT
AG CHEMICALS

REGENERATIVE AG
PRODUCTS

www.agrosourcegroup.com | 805-867-6700

SERVICES

PRODUCTS

Water Treatment

Biologicals

Bio Stimulates

Crop Inputs

Ag Chemical

SERVICES

Crop Consulting

Regenerative Consulting

Purchase Due Diligent Consulting

Irrigation DU / ROI Consulting

WATER TREATMENT



Safe pH Control

- Sulfuric Acid Replacement
- Increase microbes by 200%
- Increase Nutrient Cycling
- Unlocks 60-80% of organic nutrients in soil



Sulfuric vs. Carbonic Acid for Water pH Control

	Sulfuric Acid	Carbonic acid
Microbiome Diversity	-12.95%	+12.34%
CO ₂ Respiration	-16%	+69%
Soil Organic Matter (SOM)	-4%	+124%
Total Organic Carbon (ppm)	115.79 to 106.72	112.61 to 264

Data from the side-by-side comparison of water pH control methods in a Pistachio orchard over the 2024 season



	ECO ₂ MIX	Sulfuric Acid Injection	Sulfur Burners
Operation	Automatic feedback loop determining injection rates, non-corrosive, regularly calibrated	Generally operates with set injection rates, corrosive, high maintenance and repair costs, dangerous acid storage	Manual operation, corrosive, irritating smoke
Maintenance	Probes calibrated every 6-8 weeks, remote monitoring	Regular monitoring, calibration, leak and corrosion checks	Regular monitoring, corrosion checks
Initial Investment	No upfront investment	\$15,000+	\$30,000+
Input Costs	Monthly cost that includes CO ₂ , servicing	Sulfuric acid	Sulfur inputs
Energy Costs	1 HP motor	Minimal	15+ HP motor
pH Control Benefits	Prevents scale, improves distribution uniformity and nutrient uptake	Same	Same
Soil Health Benefits	Increases infiltration, SOM, aggregation, microbes; reduces EC	Neutral or negative impact, high hyper-acidification risk	Neutral or negative impact, high hyper-acidification risk
Compatibility	Conventional & Organic	Conventional	Conventional & Organic

WATER TREATMENT



WHY CHANGE TO AN ECO₂MIX PH SYSTEM?

The only Regenerative, Efficient, Fully Automated, Investment-Free pH Solution

ECO₂MIX offers a simple alternative to sulfuric acid or sulfur burners for pH control, using carbonic acid to reduce water pH naturally.

ECO₂MIX Water = Rainwater (H₂O + CO₂)

We simplify pH control and enhance soil health by improving nutrient uptake and water infiltration, aligning farming practices with nature's processes.

Effects of pH Treatment on Soil Health

Sulfuric Acid

- ✔ Creates unfavorable conditions for soil organisms.
- ✔ Promotes soil hyper-acidification.
- ✔ Increases soil EC in sodic soils.
- ✔ Reduces water infiltration by breaking soil aggregates.
- ✔ Possibly increases Fe and Al toxicity.

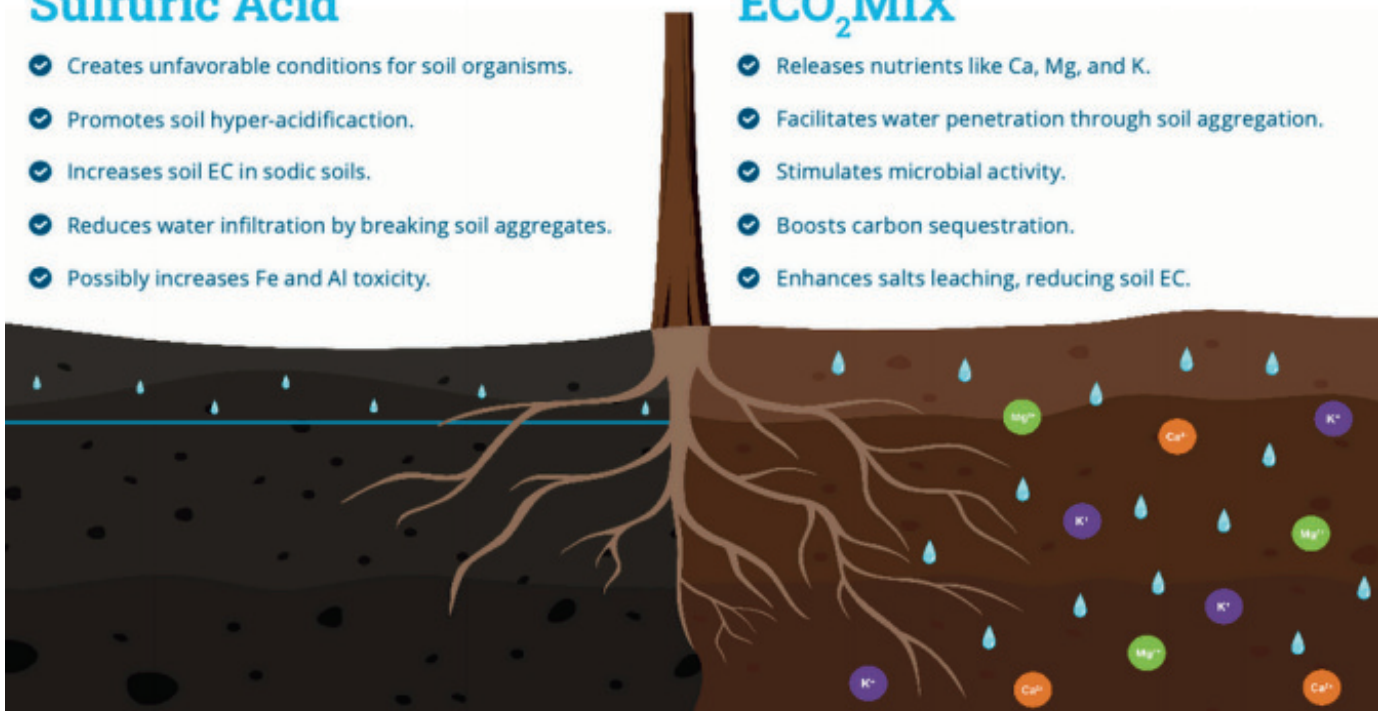
It's safer

Sulfuric acid poses serious health risks, being corrosive to human tissues including lungs, skin, and eyes, and can cause immediate, potentially irreversible damage. It also risks hyper-acidifying soil, harming plants and soil microbiomes.

In contrast, carbonic acid (H₂CO₃) forms naturally when carbon dioxide dissolves in water. It's safer, like using rainwater to adjust the water pH.

ECO₂MIX

- ✔ Releases nutrients like Ca, Mg, and K.
- ✔ Facilitates water penetration through soil aggregation.
- ✔ Stimulates microbial activity.
- ✔ Boosts carbon sequestration.
- ✔ Enhances salts leaching, reducing soil EC.



LIVING WATER BIOLOGICAL



WHAT IS LIVING WATER?

An Automated, Low Cost Solution to Enhance Your Soil

Unlock Your Farms Potential

Are you ready to increase crop yields and improve the overall quality of your crop?

Introducing Living Water – a revolutionary, low-cost, automated solution designed to enhance your soil biology and optimize your irrigation. Experience healthier soils, more robust crops, and more efficient fertilizer usage, all in one process.

Living Water is a patent pending, automated system that enriches your soil microbiome with beneficial microbes, fungi, and bio-stimulants with each irrigation, automatically applied every time you irrigate, throughout the growing season with ZERO application costs.

Living Water is a powerful system that ensures that your crops receive a continuous supply of nature's vital soil microbials, restoring the natural soil microbiome which promotes healthier, stronger crops.

Key Benefits:

- Increase Soil Biology
- Zero Application Costs
- Increased Soil Health
- Increased Biological Carbon
- Increase Nutrient Availability
- Increased Plant Health
- Increase Microbial Activity

**An affordable
Biological Solution**



LIVING WATER BIOLOGICAL



How Does Living Water Work?

One of the greatest values of Living Water is its ease and simplicity. It requires no expensive equipment, no change to your current operations, and less than 15 minutes of monthly maintenance. Our Patent-Pending System enables us to turn a standard IBC tote into a purpose-built Bio-Reactor on your farm. Living Water connects to your existing water supply and irrigation system in as little as 30 minutes of setup time.

**"Inoculate,
Stimulate and
Regenerate -
Every Time
You Irrigate"**

BRANDON MASON
CREATOR/INVENTOR





REDUCE DRIFT
INCREASE DEPOSITION
EVAPORATION PROTECTION
WASH OFF RESISTANCE

WHAT IS AMPERSAND?

Ampersand is a multi-functional adjuvant for foliar applications designed to maximize the efficacy of herbicides, insecticides, fungicides and nutrients.

OMRI listed, but designed to work synergistically with both organic and conventional actives, Ampersand is not a surfactant, and works differently than spreader/stickers.

HOW DOES AMPERSAND WORK?

Ampersand works by controlling the water in your tank mix. Starting at the nozzle stage, Ampersand guides tank mix spray droplets from the tank to the leaf.

- Meticulous droplet control eliminates both fines and large droplets, resulting in 3X more spray to the leaf.
- Adhesive properties keep spray droplets on the leaf and prevent bounce, shatter and roll-off.
- A high volume droplet with humectants keep spray droplets in a liquid state 2X longer than surfactants, giving actives double the time to perform their functions.
- Droplets also have 4X the wash-off resistance from rain and overhead irrigation.

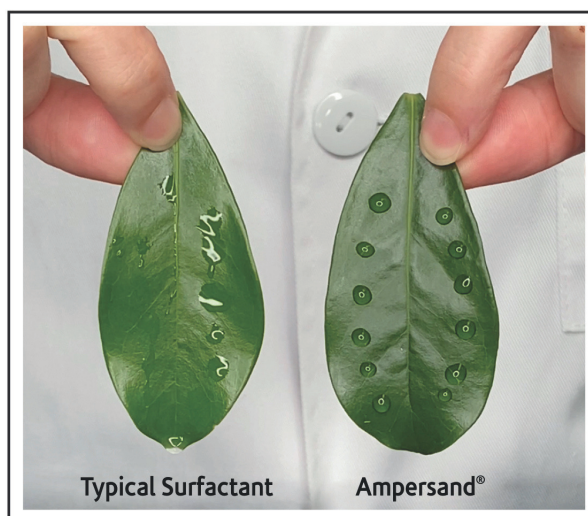
WHY SHOULD I USE AMPERSAND?

Performance:

- 49% increased control for conventional herbicides
- 79% increased control for organic herbicides
- 44% improved control for mites
- 23.5% improved control for thrips
- 26% increased control for fungicides
- and more!

Benefits:

- Low use rates to achieve results
- Allows A.I.s to also be used at low use rates while improving performance
- Achieves increased performance even in high temperature/low humidity climates
- No phytotoxicity
- Mixes readily with oils
- OMRI listed
- Category IV toxicology - no signal words required



WHO IS ATTUNE AGRICULTURE?

Born from over 100 years of hydrocolloid expertise, Attune Agriculture combines deep roots in food science and agriculture to create products dedicated to providing the world with agricultural tools that are both performance based and safe for the environment and the people who use them. For more information, please visit www.attuneag.com.



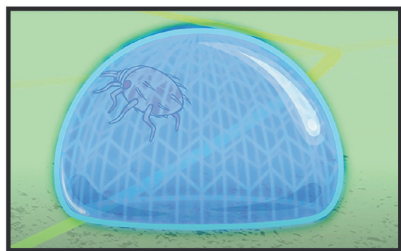
WHAT IS ENTRAPMENT?

Entrapment® is a non-systemic, contact insecticide that uses a physical mode of action to control specific insect and mite pests by transforming every spray droplet into a potential trap. Entrapment tightly anchors spray droplets to the leaf surface which capture small insects or mites (less than 4 mm) that come into direct contact with the droplet.

HOW DOES ENTRAPMENT WORK?

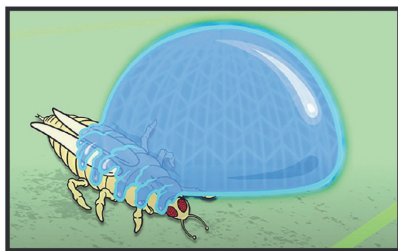
Entrapment's Rhexaloid Technology harnesses the power of hydrocolloids to create a complex molecular matrix within every spray droplet that physically controls pests upon contact in three ways. Peak performance is seen 5 - 7 days post application. Pests seen on plants in this time frame have been controlled by Entrapment droplets and terminated.

ENGULF



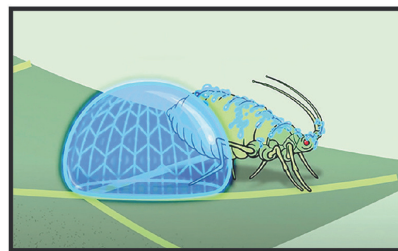
Very small sized insects & mites (<1mm; 1st & 2nd instar) are engulfed by the droplets and suffocated.

TRAP



Slightly larger insects (1-3mm; 3rd to 5th instar) are trapped by the droplets. Once an appendage or wing makes contact with a droplet, the insect is stuck to the droplet and unable to break free.

IMMOBILIZE



Insects large enough (3-4mm) to overcome a droplet's adhesion become coated with the drop's contents. The coating on the pest picks up debris as it moves about the leaf surface. Once the coating dries, the insect becomes immobilized.

BENEFITS

- ▶ Broadly registered by EPA for use on most fruit, nut, vegetable, and row crops.
- ▶ Unique spectrum of activity, providing effective control of aphids, thrips, psyllids, whiteflies, scales, leafhoppers, mites and certain plant bugs, chinch bugs and small caterpillars.
- ▶ Exempt from tolerances, with 0 Day PHI and 4 hour REI.
- ▶ No phytotoxicity
- ▶ Can be tank mixed with a broad range of insecticides, fungicides, PGRs and foliar fertilizers.
- ▶ Low potential for resistance development, valuable tool in all insect resistance management (IRM) strategies.
- ▶ Soft on most beneficials, compatible with a wide range of insect pest management (IPM) strategies.
- ▶ 4 precise formulations
- ▶ EPA label registered under the new Endangered Species Act (ESA) guidelines

PRODUCT TYPES & PERFORMANCE

Entrapment insecticides have been rigorously tested at leading ag research facilities across the U.S.

FV

30%

better aphid on blueberry control than leading chemical standard

Fruit & Vegetable: optimized for the specific needs of high value crops such as fruits, vegetables, and nuts.

RC

12.6%

better plant bug on cotton control than leading chemical standard

Row Crop: targets pests on large acreage row crops using low spray volumes such as wheat, cotton, and sorghum.

SP

40.9%

better whitefly on greenhouse tomato control than leading chemical standard

Specialty: OMRI listed for the specific needs of organic crops, greenhouses, turf and ornamentals, and golf courses.

CK

34%

better NOW on almond control than leading chemical standard

Caterpillar Killer: targets hard to kill pests such as navel orangeworm and codling moth, as well as whiteflies and mites.

*results may vary depending on external factors



**NITROGEN &
POTASSIUM UPTAKE**

YIELD INCREASE

**IRON, ZINC, &
MAGNESIUM UPTAKE**

PRODUCT GUIDELINE



RATES

32oz - 2 Gallons **Soil Applied**
1 Pt -2 Gallons **Foliar Applied**
(Every 14-21 Days)



GENE UP-REGULATION

K-Ferm is genetically proven to activate specific nutrient genes responsible for Nitrogen Transport, Potassium Ion loading, Micronutrient uptake, & long-range Potassium transport from the roots to shoots.



UPTAKE & YIELD

K-Ferm works by stabilizing the flow of nutrient charges in plant cells. This allows continuous phloem transport rather than pulsation.



What we know is happening



Genetic Activation & Rhizosphere Effect

- Our organic Potassium provides the plant with a non-toxic form, which is immediately available in a solute or in a foliar solution. From which the plant can place directly into its metabolism, while simultaneously being energy-saving.
- (Gene Activation) Membrane transporter genes are activated, helping facilitate the translocation of most nutrients from anywhere in the plant to somewhere where they are more crucially needed (this reduces waste & optimizes energy utilization).
- (Gene Activation) Amino Acid (A.A.) uptake genes that specialize in the uptake of AAs can reallocate from source leaves to important sinks (Fruit or Seeds). In addition, Cytokinin genes are shown to be upregulated in this same window, leading to cell division.
- (Gene Activation) Aquaporin signal transduction is shown to regulate osmotic flow of water, allowing more nutrient flow, drought response priming, and cell wall remodeling at the fine root hairs.
- (Gene Activation) Carbohydrates (plant sugars) are transported more easily throughout the plant
- Nano-Scale Carboxylic Acids trigger key responses in the rhizosphere by providing chemo-signaling, which recruits healthy populations of PGPR's near the root zone.
- Short-term rhizosphere pH reduction creates nutrient availability and symbiosis with healthy fungal and bacterial (PGPR) populations.

BIO STIMULANTS



Crop4Life®

TECHSHEET

Crop4Life® technology is a carefully formulated complex of unique flavonoids and different plant extracts, including Citrus aurantium and organic acids, designed as an organic, foliar-applied suspension concentrate with potassium carbonate. Crop4Life® has been extensively tested for more than 20 years on 48 different crops.

What is Crop4Life® technology?

- ▼ Crop4Life® is a complex of unique flavonoids, different plant extracts, organic acids and potassium carbonate.
- ▼ Suspension concentrate, excellent compatibility.
- ▼ Organic certified (OMRI listed and CDFA certified).
- ▼ Designed as a foliar application.

Guaranteed Analysis

% W/W

K ₂ O	7 %
pH	3.5
Density	9.18 lbs per gallon

Compatibility

Crop4Life® 0-0-7 is compatible with most agricultural chemicals but should not be tank mixed with fungicides, insecticides, growth regulators, surfactants, water soluble foliar nutrients and selective post emergence grass and broad leaf herbicides, **if there has been no experience or use of the combination in different crops previously; consult your local supplier.**

Benefits

Stress:

- Improved abiotic and biotic stress tolerance, through induced resistance and stress metabolism (i.e., cell wall, secondary metabolites and waxes)
- Abiotic: salinity, drought, heat and cold
- Biotic: pest and disease

Soil and root health:

- Enhanced root development
- Increased root exudates
- Increased activity of beneficial soil organisms
- Improved colonization on roots
- Suppresses harmful soil organisms
- Nutrients: has the potential to improve availability, uptake and translocation

Improved:

- Nutrient use efficiency
- Yield
- Flower stimulation
- Fruit set and retention
- Fruit quality: size, color, firmness and finish (cracking and russetting)
- Shelf life

What does Crop4Life® do?

Activates more than 2500 genes in Arabidopsis

Increases plant energy

Inducing and suppressing several pathways



Enhances photosynthesis

Increased beneficial root exudates to:

- Increase activity of beneficial soil organisms
- Improve colonization on roots
- Improve availability and uptake of nutrients

Shift toward:

- Signaling

AG CHEMICAL



Aqua-Drive

The #1 Soil Wetting Agent

Aqua-Drive is a non-ionic surfactant designed to improve soil wetting and penetration of treated irrigation water. It reduces the surface tension of water to as much as 60%, allowing water to flow into the soil profile.

CONTACT INFORMATION

435.896.8870

1720 South Red Hills Drive, Richfield, Utah 84701

diamondkgypsum.com



BLOCK POLYMER SURFACTANT

Aqua-Drive's unique chemistry treats the soil and the water driving moisture into hard-to-wet soil profiles.



TWO MODES OF ACTION - Reduces surface tension of irrigation water and attaches to hydrophobic soil colloids driving water into hard to wet soil profiles.



UNIQUE CHEMISTRY - Aqua-Drive will re-wet itself over multiple irrigations up to 45-60 days.



FLEXIBLE APPLICATION - Safe to use with center pivot irrigation systems, drip irrigation systems, and ground applicators



MORE AVAILABLE WATER - Reduced pooling and runoff means more water enters the root zone to be available for plants.

TECHNICAL DATA

Aqua-Drive

The #1 Soil Wetting Agent



Available in 2 x2.5 Gallon Jugs and 265 Gallon Totes

PRODUCT SPECIFICATIONS

CONTAINS NON-PLANT FOOD INGREDIENTS

ACTIVE INGREDIENTS

25.0% Copolymers of polyethylene & polypropylene glycols

75.0% Inert ingredients

NET WEIGHT 8.42 Pounds /Gallon @ 68°F

FOR PROFESSIONAL OR INDUSTRIAL USE ONLY. NOT A PLANT FOOD INGREDIENT

Visit <https://diamondkgypsum.com/> for full label and use directions.

GENERAL INFORMATION Aqua-Drive improves the infiltration and penetration of applied irrigation water in agricultural crops, ornamental nursery stock and managed turf. It is formulated to enhance adhesive tension, and relieve cohesive tension in water, to minimize repellency of hydrophobic soils. Aqua-Drive may be applied by conventional spray rig equipment and through most irrigation systems. **Note:** If used with earthen ditch systems, inspect treated areas regularly.

DIRECTIONS FOR USE

Irrigation Injection Systems: Inject Aqua-Drive initially at a rate of 2 quarts per acre, followed by 1 quart per acre monthly throughout the growing season.

Tank Mix Sprayers: Apply Aqua-Drive at an initial rate of 2 quarts diluted in 40 to 50 gallons of water spray applied per acre. Reapply in the same manner at a rate of 1 quart per acre monthly if conditions require.

Transplant Application: Add Aqua-Drive at 2 quarts per 1,000 gallons of transplant water.

Managed Turf Spray Applications: Aqua-Drive may be applied directly to managed turf for the treatment of difficult to wet hydrophobic soils. For Highly Maintained Turf (such as golf greens and tees): Initially spray apply Aqua-Drive at a rate of 8 ounces diluted in 1 to 3 gallons of water per 1,000 square feet. Follow with monthly application of 4 ounces per 1,000 square feet, diluted in the same manner. A brief watering of treated areas to ensure that Aqua-Drive is moved to the soil profile is recommended for best results.

AGROCHEMICALS - I

INSECTICIDES :

- Acephate
- Alpha-Cypermethrin
- Azadirachtin
- Chlorpyrifos (Ethyl/Methyl)
- Cypermethrin (50:50/High Cis)
- Deltamethrin
- Dichlorovos
- Endosulfan
- Ethion
- Fenvalerate
- Malathion
- Monocrotophos
- Phorate

INSECTICIDES :

- Phosphamidon
- Profenofos
- Propoxur
- Quinalphos
- Temephos
- Terbufos
- Triazophos

FUMIGANTS :

- Aluminium Phosphide

FUNGICIDES :

- Copper Oxychloride
- Ferbam
- Hexaconazole
- Propiconazole
- Sulphur WD Granules
- Thiram
- Ziram

HERBICIDES :

- 2,4-D (Acid Na, Esters, Isobutyl, Isocytl)
- Atrazine
- Ethofumesate
- Isoproturon
- Metamitron
- Triclopyr

PLANT GROWTH REGULATOR :

- 2-Naphthoxyacetic Acid (BNOA)
- AATC
- Naphthylacetamide
- Naphthylacetic Acid
- Tricentanol

RODENTICIDES :

- Zinc Phosphide

AGROCHEMICALS - II

INSECTICIDES :

- Abamectin
- Acephate
- Acetamiprid
- Amitraz
- Bifenthrin
- Buprofezin
- Carbaryl
- Carbofuran
- Cartap
- Chlorfenapyr
- Chlorfluazuron
- Clodinafop-Propargyl
- Cyromazine
- Diafenthiuron
- Diazinon
- Dichlorovos
- Dicofol
- Diflubenzuron
- Dimethoate
- Emamectin Benzoate
- Endosulfan
- Ethofenprox
- Fenbutatin oxide
- Fenitrothion
- Fenvalerate
- Fipronil

INSECTICIDES :

- Flumethrin
- Hexythiazox
- Imidacloprid
- Ivermectin
- Lambda-Cyhalothrin
- Malathion
- Metaldehyde
- Methamidophos
- Methomyl
- Methyl Parathion
- Monocrotophos
- Niclosamide
- Phenthoate
- Piperonyl Butoxide
- Pirimiphos
- Profenofos
- Propargite
- Propoxur
- Tetradifon
- Tetramethrin
- Thiodicarb

HERBICIDES :

- 2,4-D Acid
- 2,4-D Amine Salt
- Acetochlor
- Ametryn
- Atrazine
- Bentazone
- Bispyribac-Sodium
- Bromacil
- Bromoxynil
- Butachlor
- Chlorimuron
- Chlorsulfuron
- Clethodim
- Clomazone
- Clopyralid
- Desmedipham
- Dicamba
- Dichlormid
- Diclofop-Methyl
- Diquat
- Diuron
- EPTC
- Fenoxaprop-P-Ethyl
- Flumeturon
- Fluroxypyr
- Fomesafen

HERBICIDES :

- Glufosinate-Ammonium
- Glyphosate
- Haloxyfop
- Hexazinon
- Imazapyr
- Imazethapyr
- Isoproturon
- Linuron
- MCPA
- Metamitron
- Metribuzin
- Metsulfuron-Methyl
- MSMA
- Nicosulfuron
- Oxadiazon
- Oxyfluorfen
- Paraquat
- Phenmedipham
- Picloram
- Prometryn
- Propanil
- Quizalofop
- Simazine
- Terbutylazine
- Triclopyr
- Trifluralin

FUNGICIDES :

- Azoxystrobin
- Benomyl
- Captan
- Carbendazim
- Carboxin
- Chlorothalonil
- Difenconazole
- Epoxiconazole
- Flutriafol
- Folpet
- Fosetyl-Aluminium
- Imazalil
- Iprobenfos
- Iprodione
- Isoprothiolane
- Kasugamycin
- Kresoxim-Methyl
- Mancozeb
- Maneb
- Metalaxyl
- Myclobutanil
- Penconazole
- Prochloraz
- Procymidone
- Propamocarb

FUNGICIDES :

- Propiconazole
- Pyrimethanil
- Tebuconazole
- Thiabendazole
- Thiram

RODENTICIDES :

- Triadimefon
- Brodifacoum
- Bromadiolone
- Coumatetralyl
- Zinc Phosphide

REGULATORS :

- Ethefon
- Gibberellic Acid
- IBA/IAA
- Mepiquate Chloride
- Paclobutrazol

Registered Crops

- Permanent Tree Crops
- Citrus
- Wine Grapes
- Avocado
- Stone Fruit
- Strawberries / Berry Crops
- Blueberries
- Cane berries
- Vegetables
- Turf Grass & Ornamentals



MCABEE AG CONSULTING, INC.
Independent Agricultural Due Diligence
for Informed Land Decisions

AgResource



Independent Due Diligence for Agricultural Land Transactions

McAbee Ag Consulting provides professional, independent due diligence services for buyers, sellers, and agricultural real estate professionals. Our evaluations identify risks, verify infrastructure, and clarify production potential—helping clients move forward with confidence before close of escrow.

Due Diligence Services

- Irrigation System Analysis
- Well Testing
- Soil, Water, Plant and Virus Analysis
- Crop Feasibility & Historical Use Review
- Comprehensive Written Due Diligence Reports



Why McAbee Ag Consulting

- Transaction-focused, unbiased evaluations
- Practical, field-based analysis
- Clear documentation suitable for escrow and decision-making
- California agriculture expertise
- Licensed Certified Crop Adviser and Pest Control Advisers

Who We Work With

- Agricultural buyers and sellers
- Agricultural real estate agents and brokers
- Investors and family offices
- Estate and trust land transactions
- Financial institutions

Eryn Grey, PCA/CCA

CA-PCA: Lic 129028
CCA-Ssp: Lic 341161

Kyle McAbee, PCA/CCA

CA-PCA: Lic 132604
CCA-Ssp: Lic 398495



FIELD REPS

Eryn Gray - All Areas

Agronomist - CCA / PCA / TSP

Ph: 805-235-5030

EM: eryn@agrosourcegroup.com

Chris Harless - California / Idaho

Ph: 805-206-1215

EM: chris.h@agrosourcegroup.com

Kyle McAbee - California / Idaho

CCA / PCA

Ph: 805-591-0896

EM: mcagconsulting@outlook.com

Jim Dana - California

CCA / PCA

Ph: 805-680-0875

EM: jdana@agriwestco.com

Cord Nunes - California

Ph: 831-331-7370

EM: cmjnunez@outlook.com